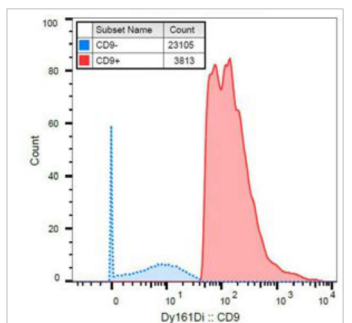


Mass Cytometry Antibodies (CyTOF[®])

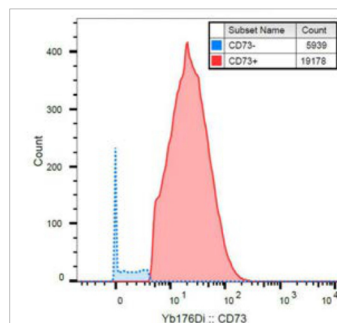
Ver. 01-2021



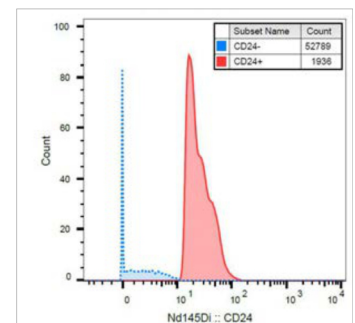
Antigen	Clone	Host	Isotype	Reactivity
CD3	UCHT1	Mouse	IgG1	Human, Primates
	MEM-57	Mouse	IgG2a	Human
CD4	MEM-241	Mouse	IgG1	Human
CD8	MEM-31	Mouse	IgG2a	Human
CD9	MEM-61	Mouse	IgG1	Human
CD15	MEM-158	Mouse	IgM	Human
CD24	SN3	Mouse	IgG1	Human
CD32	3D3	Mouse	IgG1	Human
CD33	WM53	Mouse	IgG1	Human, Primates
CD45RA	MEM-56	Mouse	IgG2b	Human
CD73	AD2	Mouse	IgG1	Human
CD99	3B2/TA8	Mouse	IgG2a	Human
CD105	MEM-226	Mouse	IgG2a	Human, Rat
CD116	4H1	Mouse	IgG1	Human
CD271	NGFR5	Mouse	IgG1	Human, Primates, Cat, Rabbit
Drebrin	DBN-N-03	Mouse	IgG2b	Human
GCPII / PSMA	GCP-05	Mouse	IgG1	Human
HLA-Class I	W6/32	Mouse	IgG2a	Human, Primates, Cat, Cow
Lysozyme	LZ598-10G9	Mouse	IgG1	Human



anti-CD9 clone **MEM-61** conjugated with ¹⁶¹Dy



anti-CD73 clone **AD2** conjugated with ¹⁷⁶Yb



anti-CD24 clone **SN3** conjugated with ¹⁴⁵Nd

LabNed.com
exploring possibilities

